

# Epitaphs and Headstones

## *a cemetery tour featuring the legendary people of Perth County*

World renowned actors of the stage, and a legendary rock piano player. Canada's ninth prime minister, and a victim of the Titanic. Discover the diverse individuals that called Stratford and Perth County their home, while enjoying the natural beauty of some of the area's oldest cemeteries.

### **Avondale Cemetery**

4 Avondale Avenue, Stratford N5A 6M4



With its park-like setting and shade bearing trees, Stratford's Avondale Cemetery opened in 1871. Approximately 22 acres of land located west of the river was defined for burial purposes. The plan for the site revealed more than half of it sloping to the southeast. The Catholic Cemetery area was developed in 1883 when the London Diocese purchased land adjacent to the public cemetery. It was later sold to the City on the understanding that the religious nature of the area would be maintained. Catholic areas are designated by the names of Saints. The winding roadways and circular gardens are maintained by the city.

The early records showed death, burial date and the cause of death, some of which would be considered unusual by today's standards. Some of the causes of death included such things as; teething and brain fever, typhoid, cholera and "found dead in lock up". Cemetery records also indicate that during the flu

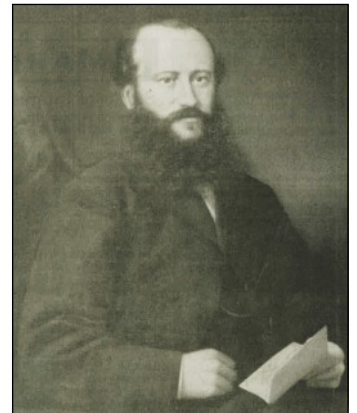
epidemic of 1918, in the period of October 7 to November 7, 88 influenza victims were buried in the Avondale Cemetery.

While parts of this tour may be enjoyed by foot, most of the sites are visible from the paved roadways should you chose to drive.

Begin your tour at the chapel. You may park your vehicle here and set out by foot. To your immediate right you will see a tall pink granite pillar honouring Robert MacFarlane.

### **Robert MacFarlane, politician (1835-1872).**

Born in 1835 in Lanark County, Robert MacFarlane set up his law practice in Stratford in 1857 with Daniel H. Lizars. MacFarlane had been a Liberal member of parliament and was re-elected in 1867 to represent the Perth South riding in the first parliament of the new Dominion of Canada. He died in office in 1872, at thirty-seven years of age. Most members of the House of Commons, including Sir John A. MacDonald, accompanied his body to the train station in Ottawa. He was brought back to Stratford by "a deputation from St. Marys, Downie and Stratford" and was buried here with his infant son. Stratford's local paper The Beacon Herald, reported that "the funeral was perhaps the most imposing ever witnessed in town."



On the right side of the grassy path running down the hill, is the marker for Daniel Home Lizars

### **Lizars Family – Daniel H. Lizars, Judge (1822-1894)**

The Lizars family were influential early residents arriving in dramatic fashion aboard a chartered schooner – The Robroy - from Scotland to the Huron Tract in 1834. According to family legend, Lizars' grandfather after piloting the schooner due to the ship's captain falling ill, ran it onto a sandbar interrupting a church service atop the bluffs causing the congregation to run down the hill and rescue the stranded family and their belongings in small boats. Daniel H. Lizars was 11 years of age at the time. Life was especially harsh for the "bookish" Lizars as they were unfamiliar with farming virgin land. He was called to the bar in 1853 and began his professional career in Goderich and Stratford. Mr. Lizars was appointed County attorney in 1858. His wide knowledge of the law and his mastery of its principles earned him a summons to the County bench in 1864, followed in 1877 by a master in chancery and local Judge of the High Court of Justice in 1882. His daughters Robina and Kathleen famously wrote In the Days of the Canada Company – a witty and sometimes wickedly scandalous commentary on the early history of the Huron Tract.

On your right, midway down the section, stands a large white monument. Behind it a grey pulpit-style footstone honours J. Waldo Monteith.

**J. Waldo Monteith, politician (1903-1981).**

J. Waldo Monteith or “Monte” as his friends called him was born in Stratford Ontario on June 24, 1903. He attended school in Stratford before going on to Trinity College and the University of Toronto. While there Monte obtained a degree to become a chartered accountant. Soon after, he married Mary Bancroft in 1936 and had three daughters, he then returned to his hometown Stratford to open the accounting firm of Monteith and Monteith in 1983. A year later he was elected to Stratford City Council and the Mayor in 1944. After his term, he was elected to become the Perth County Conservative Member of Parliament in Ottawa for the next six years. From 1957 to 1963, he served as the Minister of National Health and Welfare. Monteith also became financial critic and chairman of the Progressive Conservative caucus. In the 70s Monte ventured back to his hometown Stratford and was awarded the Silver Jubilee Medal for contributing to his community. Monteith lived out his days peacefully in Stratford and died December 19, 1981.



To your right at the top of the hill is the Robertson vault. To the left of the vault's gated entry seven stones over is the Patterson family gravesite.

**Tom Patterson, Stratford Shakespearean Festival founder (1920-2005).**



Remembered as a dreamer, a visionary, a saviour, Tom Patterson was also a miracle worker when, in 1953, he created a Shakespearean festival on the banks of the Avon River and kick-started the transformation of his home town. At a time when the introduction of diesel locomotives was eroding Stratford's place as steam-based railway centre, the ideas-rich journalist chose classical theatre over an international summer hockey school as his solution to the city's reversal of fortunes. Tom grew up in Stratford, where the family lived at 132 Norman St., and his father left his job as a mechanic in the Grand Trunk Railway shops to open a bookstore. As support for his summer theatre idea gained momentum, Tom resigned his position with the MacLean Hunter publishing company in Toronto and moved back to Stratford. In commemoration of the miracle he fashioned, the City of Stratford dedicated Tom Patterson Island in the Avon River in 1978, and in 1991 the Stratford Festival renamed its Third Stage the Tom Patterson Theatre.

Look up to your right to the centre of Block L to see the large, grey granite monument of John Idington.

**John Idington, Supreme Court Justice (1840-1928).**

John Idington was born in Puslinch, Upper Canada, on October 14, 1840. He studied at the University of Toronto, graduating with a law degree in 1864. He settled in Stratford, where he practiced for 40 years. Early in his career, he served as Crown Attorney and Clerk of the Peace for the county of Perth. In 1894 and 1895 he was president of the Western Bar Association. He was appointed to the High Court of Justice of Ontario in 1904 and to the Supreme Court of Canada on February 10, 1905. He served on the Supreme Court for 22 years and retired on March 31, 1927. Justice Idington died in 1928, at the age of 87. The etched thistles honour the family's Scottish heritage.



Continue along the paved road to the R marker. To your immediate left follow the stoney footpath down to the N marker. Turn right. Look to the third plot on your left.

**Elsie Gertrude Ross, World War 1 nurse (1883-1916)**

Here is the plot of Elsie Gertrude Ross, a nursing sister in the Canadian Army Medical Corps in World War I. She died of pneumonia while serving at a convalescent hospital for returning soldiers. She was buried here in 1916 with full military honours. Such tributes were rare for nursing sisters. Miss Ross's name appears in the Canadian First World War Book of Remembrance. The Victorian Order of Nurses place flowers here every Remembrance Day – continuing a tradition started by a son of one of Miss Ross's patients.

Travel back to the paved road. While referring to the tour map, it is recommended that you drive for the duration of the tour. As you approach the round-a-bout, Richard Monette's headstone will be to your left.

**Richard Monette, actor and former Artistic Director of the Stratford Shakespearean Festival (1944-2008).**

Born in Montreal, Monette's professional stage career began at the age of 19 in Toronto. His association with the Stratford Festival began in 1965, where he played more than 40 roles. His acting career also included performances across Canada, on Broadway and in Britain as well as more than 30 film and television productions.

Monette's directing career began in 1978 with a Festival production of *Come and Go*, four plays by Samuel Beckett. Ten years later, his *Taming of the Shrew*, set in the 1950s, won immense critical and popular acclaim, and is still regarded by many as a definitive interpretation of this controversial play. From the late 1980s onward, directing became the new focus of his career.

In 1994, his 23rd season with the Festival, he became Artistic Director. During his tenure he directed more than 40 productions, established the For All Time Endowment Foundation, founded the Birmingham Conservatory for Classical Theatre Training, saw many renovations to the festival and Avon theatres as well as the creation of the Studio Theatre.

A recipient of the Queen's Golden and Silver Jubilee Medals, Mr. Monette holds honorary doctorates from the University of Windsor, the University of Western Ontario and his alma mater, Concordia University. He was named to the Order of Canada in 1997, and in 2006 the Canadian Theatre Critics Association awarded him the Herbert Whittaker/Drama Bench Award for Outstanding Contribution to Canadian Theatre.



The cluster of markers to the right in section 4 includes that of R. Thomas Orr.

**R. Thomas Orr, founder of the Stratford parks system(1870-1957).**



R. Thomas Orr was a lifelong member of the Stratford parks board and the driving force behind this city's parks system, including the Shakespearean Gardens near the Perth County courthouse. In 1912-13 he led the fight to save the Avon riverfront and millpond from railway development and oversaw the transformation of the industrial area into parkland. An architect and builder who later founded an insurance company. He also helped to establish Stratford's public library and war memorial, to extend Highway 7 to Stratford, and to found the Upper Thames River Conservation Authority and the Stratford Historical Society. He is commemorated on an Ontario Heritage Foundation plaque on the south shore of the Avon River, west of Waterloo Street, near the band shell.

Continue along the roadway and turn right at 23B. Continue along looking to the left for section markers 23A and 23B. Using 23A as a guide, follow the grassy path between the graves nine rows south. To your right you will see the flat black stone, etched with a piano keyboard which marks Richard Manuel's grave.

**Richard Manuel, The Band (1943-1986).**

Born in Stratford in 1943, Richard Manuel, or "Beak" as he was nicknamed by friends, began to experiment with piano during his teen years. The Revols were formed in 1957 performing the very first songs Manuel ever wrote. They gained popularity in Ontario at one of their first gigs opening for Ronnie Hawkins' band The Hawks. The crowd was so taken by Manuel's performance of Ray Charles' *Georgia On My Mind* that rather than compete with The Revols, Hawkins hired them. By the end of 1961, The Revols returned to Stratford with Manuel at the age of 18, staying on with The Hawks. The Hawks got their big break when Bob Dylan asked them to play on his world tour from 1965-66. Eventually Manuel left The Hawks along with Levon Helm. By 1970 The Band had emerged consisting of Richard Manuel, Levon Helm, Robbie Robertson, Garth Hudson and Rick Danko. The rock n' roll lifestyle led Manuel to a life of drug abuse and alcohol. The Band had its last performance immortalized in Martin Scorsese's 1978 concert film, *The Last Waltz*. Richard Manuel, under the influence of alcohol and cocaine, committed suicide by hanging in a hotel room in 1986. The image on his grave stone, appropriately enough, is that of a keyboard.



Continue to the tenth row and turn left at the Gladding family marker. The ninth marker to your right is Jim Wnkler's grave.

### Jim Winkler, drummer for The Revols (1942-1999).

Jim Winkler was the drummer for the Canadian band The Revols. Formed in 1957, the then fourteen and fifteen year old band members gained popularity in Ontario at one of their first gigs opening for Ronnie Hawkins' band The Hawks. Hawkins hired them as his band. While working for Ronnie Hawkins, they went to Fayetteville, Arkansas and played a house gig at The Hawk's Club. By the end of 1961, The Revols returned to Stratford.



Travel back to the paved road to section 25B. William Hutt's large stone monument is to your right.

### William Hutt, actor (1920-2007).



Born in Toronto May 2, 1920, Mr. Hutt earned his reputation as one of the world's most respected classical actors while performing in Canada, primarily at the Stratford Shakespeare Festival. He joined the festival during its inaugural season in 1953 and continued to tread the boards until 2005, when he declared retirement at the age of 85. Appearing in more than 100 plays, Hutt was the rare performer who played both fools and kings, and tragic as well as comic leads. Although giving unforgettable performances as King Lear and Prospero, it was his role as Lady Bracknell in Oscar Wilde's play in 1975 that garnered such fame, that was revived in 1976 and again in 1979. Hutt also appeared on stages in London, Toronto and New York. He won every major theatre award in Canada, as well as a Governor General's Award for lifetime achievement, and was made a companion of the Order of Canada. William Hutt died of leukemia at the age of 87 in 2007. After his death, the Waterloo Street bridge that crosses the Avon river immediately south of his former home on William Street was named the William Hutt Bridge in his honour.

Did you know? William Hutt volunteered in the Second World War as a medic in the 7th Light Field Ambulance unit, winning the Military Medal in 1944 for "bravery in the field" during the Italian campaign.

This concludes the Avondale Cemetery portion of the tour.

Travel north on John Street to Huron Road. Turn right and travel to Mornington Street. Turn left. St. James Church will be to your right. God's Holy Acre is located on the south side of the church.

### St. James Church

God's Holy Acre, Stratford's earliest cemetery.

This is the official church of the Crown and is the third church building on this site. Built in 1870, the tower was added in 1905. The church's first pipe organ, installed in 1874 and probably powered by water, was rebuilt in 1902 and several times since, most recently in 1992. The biggest of the 11 bells in the church tower weighs 955 kilograms (2,100 pounds) and is nicknamed Big Joe. Beside this lovely Early Decorated Gothic style church is God's Holy Acre, a cemetery used between 1844 and 1871. The gravestones, including one of the Sargint family (owner of the Shakespeare Inn), a brother and his son, have been laid flat to reduce deterioration.

This concludes the Stratford portion of the cemetery tour.

To continue with the St. Marys portion of the tour, travel south on Erie Street where it will become Highway 7 /19. Turn right at the Highway 9 exit to St. Marys. Cain Street will be to your left as you enter the city limits.

### St. Marys Cemeteries

150 Cain Street, St. Marys. N4X 1B6

There are two cemeteries in St. Marys. The "Old Cemetery" is located along the south side of Elgin Street in the East Ward. This site became overcrowded in 1885 and the town established a new municipal cemetery a few blocks further east that is still in use today. The Old Cemetery is now parkland and the individual graves are no longer marked. However, a bronze plaque, placed by the St. Marys Historical Society near the footpath, provides information about its history as the resting place for many of the community's earliest settlers.



## George Graham, Titanic Victim (1873-1912)

George Graham was born on a farm near St. Marys, Ontario. As a young man, he began work as a store clerk, eventually finding employment with a family friend, Timothy Eaton, and rising in the Eaton organization to a position of responsibility in the Winnipeg branch. Sent on a buying trip to England, he was anxious to return to Canada as quickly as possible because his wife, Edith, was unwell. He booked passage on the maiden voyage of the wonderful new White Star steam liner, Titanic, that promised to reach New York within six days. Graham was one of the many victims when Titanic struck an iceberg, April 14, 1912. His body was recovered and now rests with his wife and young son in the St. Marys Cemetery.



George Graham. Photo: William Graham

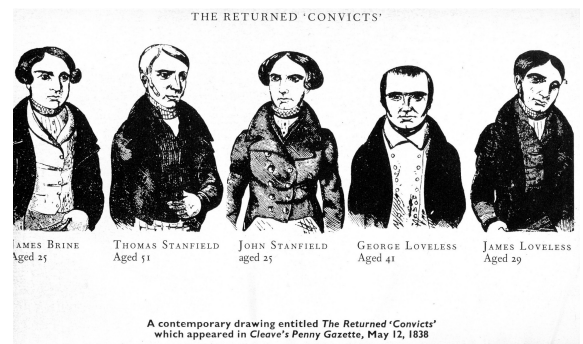
## Arthur Meighen, ninth prime minister of Canada (1874-1960).



A Canadian flag marks the grave of Arthur Meighen, ninth prime minister of Canada. He was born on a farm near Anderson, just a few miles northwest of St. Marys in 1874. The family moved to St. Marys when Arthur was 12 years old so that he and his siblings could attend high school here. He graduated with a degree in mathematics from the University of Toronto in 1896 and soon moved to Manitoba where he became a lawyer. Entering politics, he was elected Member of Parliament for Portage la Prairie in 1908. He became a member of Sir Robert Borden's cabinet and held various senior portfolios. When Borden retired, Meighen was chosen as his successor and served as prime minister for two brief periods during the 1920s. He died in Toronto in 1960 and is buried in St. Marys, not far from the graves of his parents and his grandparents.

## James Brine, Tolpuddle Martyr (1812-1902)

James Brine's gravestone identifies him as a member of the Tolpuddle Martyrs, a group of six men who attempted to form a union of farm labourers in the village of Tolpuddle, Dorset, England in 1834. They were arrested, sentenced and transported to Australia as convict labourers. However, back in England, the men became popular heroes. A large protest movement formed and applied pressure on the government until eventually the men were freed. They found their way back to England but several of them, including James Brine, and his wife Elizabeth, the daughter of another of the Martyrs, then emigrated to Canada. The Brines purchased a farm just west of St. Marys where they raised their family. It was not until after Brine's death in 1902 that his friends and neighbours learned about his earlier life as a Tolpuddle Martyr. His descendants, many of whom still live in the area, are very proud of their courageous ancestor.



This concludes the St. Marys portion of the cemetery tour.

To continue to the Shakespeare Cemetery return to Stratford along Highway 7/19. Turn right at Ontario Street and travel out of Stratford on Highway 7/8 toward Shakespeare. The Shakespeare Cemetery is just south of Shakespeare on the east side of Highway 59.

## Shakespeare Cemetery

Charles Shakespeare. Row 1

George Brown, along with his wife Hariett and the five children, ages 3-12. Row 5

By best estimates, it was in January 1868 that a newborn boy was found abandoned in a driving stable behind the inn in Shakespeare. It was agreed that the postmaster, and division court clerk George Brown and his wife would keep the baby and that the village residents would help to feed and clothe him. The infant died within three months, evidently of pneumonia, and the Reverend was asked to conduct the funeral service. He refused until such time that the boy was named. Settling on Charles Shakespeare, Charles after Charles Lehmann, owner of the inn and Shakespeare after the village, George Brown had the baby buried in Brown family plot in Shakespeare Cemetery. His grave is marked by a 15-inch headstone that reads "Charles Shakespeare." The Presbyterian Church now stands on the property where the inn and driving shed stood when the infant was found.



Travel back to the hamlet of Shakespeare. The Fryfogel Tavern is 2km east of Shakespeare on Highway 7/8

## Fryfogel Tavern

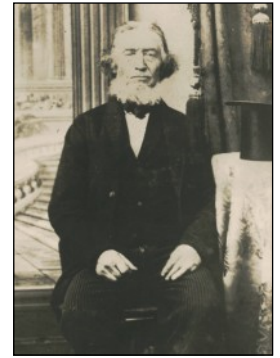
### Sebastian Fryfogel, first tavern keeper of Perth County (1791-1873)

Sebastian Fryfogel, who came to Upper Canada from Switzerland via the United States in 1827, was the first tavern keeper on the Huron Road in the Huron Tract and first settler of present day Perth County. The Fryfogel Tavern was erected by Fryfogel in 1844-45. Besides caring for the needs of weary travellers, the hotel was a community centre and host to countless banquets, receptions and socials. Council meetings for South Easthope Township were held here also, and in 1848 a public meeting at the Tavern led to the formation of Perth County. Sebastian became one of the first wardens of the new county.

As well as an inn, the Fryfogel Tavern flourished as a stagecoach stop, bringing the Royal Mail and passengers through three times a week. The tavern's demise followed in 1856, when the Grand Trunk Railway built a line a short distance behind the tavern.

Sebastian and his wife Mary had a total of 12 children, almost all of which lived near where the family settled in 1828.

In the mid 1800s the Fryfogel family had their own cemetery in the middle of a field nearby. Circa 1923, to save the cemetery from the plow, R. Thomas Orr, a local Stratford historian, had the gravestones moved to the grounds of the Fryfogel Inn. The three stones are those of Sebastian Fryfogel, his father Jakob, who was killed by a falling tree branch in 1836 shortly after his arrival, and Sebastian's six-year old son Henry who was accidentally poisoned in 1842. The exact location of their burial is unknown.



To continue with the Listowel portion of the tour, from Stratford travel north on Highway 119 to Highway 86. Turn left. Highway 86 will become Main Street. Turn right onto Wallace Avenue North (Highway 23) to McDonald Street East. Turn right and follow to Davidson Avenue North. Sections "A" and "B" will be to your left. Travel time from Stratford will be approximately 40 minutes.

## Fairview Cemetery

330 Wallace Avenue North, Listowel. N4W 1L3

### To "e" or not to "e" - the two John Livingston(e)s of Listowel.

Yes, there were two early pioneers in Listowel with the name John Livingstone. Both were prominent businessmen, originally from Scotland, with well-known brothers.

### John Livingstone Family - John Livingstone (1811-1899).

John Livingstone, (with an "e") was born in Blantyre, Scotland on May 15, 1811. He left for Canada in 1840, about the same time his famous brother, **David Livingstone**, left to explore Africa, finding the source of the Nile River while doing missionary work. John lived in Lanark County for twelve years and came to Listowel in 1860 where he was among the earliest and most prosperous merchants of Listowel until his retirement in 1873. His store was located on the north-east corner of Wallace and Main Streets. His son, John Livingstone Jr., operated Livingstone's Drug Store from that site for many years. Like his brother, John had a fondness for travel and spent many summers back in Scotland among friends and passed winters on the Pacific coast after his retirement. He died in 1899 at 88 years of age. His death date is not written on the stone in the cemetery transcription, but in 1999 his great grandson had a stone placed in John Livingstone Sr's name at the base of the family stone.



### John Livingston, Flax manufacturer (1834-1896).

John Livingston (without the "e") was born in East Kilbride, Lanarkshire, Scotland in 1834 and came to Canada in 1834 with his brother, **James Livingston**, of Castle Kilbride fame in Baden, east of Stratford. In 1869 John Livingston moved to Listowel and purchased the Barber farm where a flax mill was built, one of twelve flax mills in Ontario and Manitoba which he and his brother owned and operated, along with interests in linseed oil works, a foundry and grist mill. John Livingston built one of the finest homes in Listowel on Main Street West now known as Livingston Manor, in which are exquisite murals, similar to those in brother James Livingston's Castle Kilbride. John Livingston died suddenly in 1896.



## The Delyea Family, oldest legible stone at Fairview Cemetery.

Little is known of the Delyea family other than the family was from Elma township and lived just outside Listowel near Trowbridge. There are no obituaries for the infant Eliza, or her parents as their deaths predate any local newspapers of the time. Two siblings of Eliza, Annie and William share the same stone as their parents. Two surviving daughters from the Delyea family are documented as living in the nearby township of Maryborough by 1901.



## Jessie Keith, murder victim (1880-1894).



The victim of “the most diabolical crime ever recorded in this country,” a murder so gruesome investigators wondered if Jack the Ripper was its perpetrator, thirteen year old Jessie Keith was attacked and murdered on October 19, 1894. Keith, a pretty red-haired girl was returning with groceries from Listowel to her family farm east of town, when she was attacked by Almede Chatelle, a vagrant who led a nomadic life for almost forty years. After spotting signs of a struggle railway workers set out to get Keith’s father and together following a trail of blood found the girl’s body. The findings were so horrific, alarmed authorities cabled Scotland Yard in Britain to see if Jack the Ripper had been caught – or could he be in Canada. The search began for a strange “hairy man” residents had seen prowling the area, and soon Chatelle was arrested in the town of Erin on his way to the United States, wearing women’s clothing. He was hung in Stratford in 1895. Flowers are still planted at Jessie Keith’s monument, the fascination with this horrid event continuing to lead many to the girl’s grave.

## John Binning, Listowel’s first settler (1812-1899).

Born in 1812, in Sommersetshire England, John Binning made his way from Hamilton into the Queen’s Bush with his wife, one year old son and nothing more than two barrels of flour, meat, one ax, two augers and a saw in 1852. Traveling by oxen and jumper, the hired driver left the family with their meager possessions at a deserted shack and soon returned into the bush. Determined to locate the owner of the ramshackle building, Binning climbed a tree everyday for seven weeks and after discovering the owner, a deal was struck to purchase the shack and two hundred acres in exchange for a gun. The agreement is said to have been written by the point of a burnt stick on a piece of birch bark. John Binning was married three times and had numerous children. He died in 1899 at the age of 87.



## Major Andrew McKeever, WWI Flying Ace (1895-1919).



Known as “The King of the Two Seaters”, Major Andrew McKeever was born August 1, 1895 in Listowel. He was the world’s leading two-seater ace shooting down 30 confirmed aircraft. He flew a Bristol two-seater from May 1917 to January 1918. He was always ready and able to take on any duty, at any time. Under poor conditions of low cloud and drizzle, he volunteered, along with Lieutenant Powell his observer, to run a battle single-handedly, deep into enemy territory against nine German planes. Together, they claimed four victories and crippled another. McKeever and Powell were awarded the Distinguished Service Order for their bravery against such odds and for their photographic reconnaissance work which proved to be very valuable. McKeever was previously awarded the Military Cross and Bar for his earlier exploits. The celebrated ace of World War I was a first class shot and one of the finest acrobatic pilots in the service, always remaining calm while working under tremendous pressure. He died tragically on Christmas Day, 1919 after complications received from a car accident September of that same year. He was 24 years old.

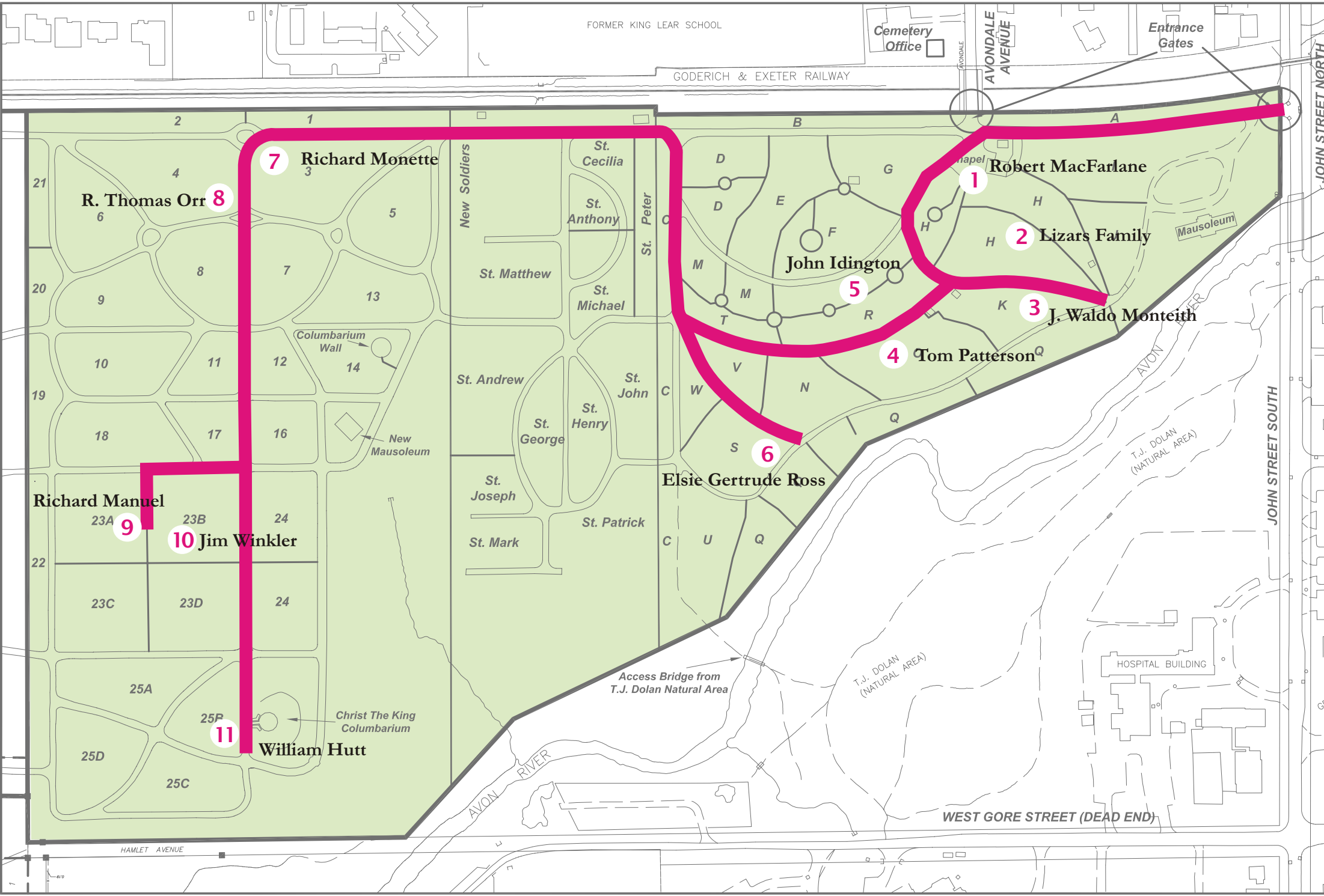
This concludes the cemetery tour.

---

## Rules for Visitors

- Cemeteries owned by the City are sacred and devoted to the burial of the dead and the provisions and penalties of the law will be strictly enforced in all cases of disturbance, wanton injury to property and disregard for the rules, or conduct unbecoming to a cemetery;
- All visitors shall conduct themselves in a quiet, orderly manner and shall not disturb any service being held, by noise or other disturbance;
- Visitors shall travel through the cemetery by roads and shall not drive over burial lots, pathways, or service paths;
- Children under twelve (12) years of age must be accompanied by an adult, who shall maintain close contact with them and be responsible for their actions;
- The carrying of firearms or the discharging of the same while within the cemeteries, except where used for the firing of volleys at a burial, is prohibited;
- No picnic, party, or other large assembly will be permitted on the cemeteries' grounds other than a funeral or memorial service;
- When a society or association desires to hold a memorial service, they should make application to the Manager at least fifteen (15) days prior to the desired date. The association or society securing this permission shall assume responsibility for any damages done to the property in the cemeteries during this time;
- Any complaints by lot owners or visitors shall be made to the Manager and not to workmen on the grounds;
- No person shall drive a vehicle at a rate of speed greater than 20 kilometres per hour within the cemetery;

There are many other fascinating gravesites in these cemeteries. For more information, contact: The Stratford\Perth Archives, 24 St. Andrew Street, 519-271-0531 ext 252. [www.stratfordpertharchives.on.ca](http://www.stratfordpertharchives.on.ca) The Stratford\Perth Archives, Listowel Branch, 260 Main Street West, 519-291-1598. The St. Marys Museum, 177 Church Street South, 519-284-3556; [museum@town.stmarys.on.ca](mailto:museum@town.stmarys.on.ca)



**CITY of STRATFORD**  
 Community Services  
 Department  
 Cemetery Division

*For More Information,  
 Please Contact:*

Avondale Cemetery  
 (Cemetery Office)  
 4 Avondale Avenue  
 Stratford, Ontario N5A 6M4  
 Ph. (519)-271-0250 Ext. 244  
 Fax. (519)-271-9488

Office Hours:

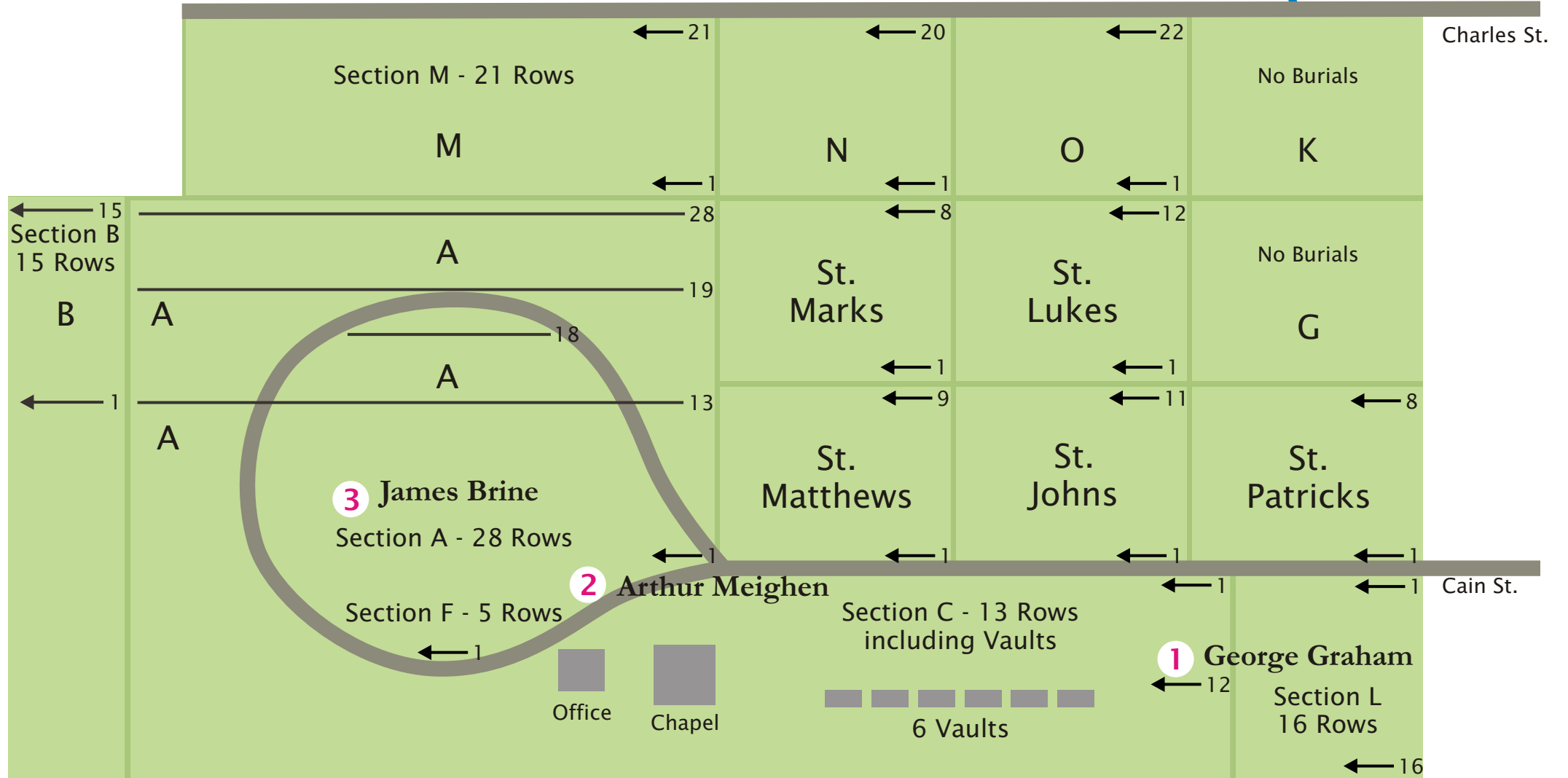
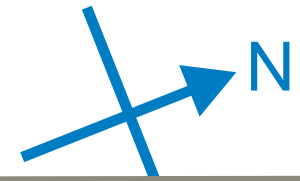
Mon.-Fri. 8:30 am - 4:30 pm



N.T.S.

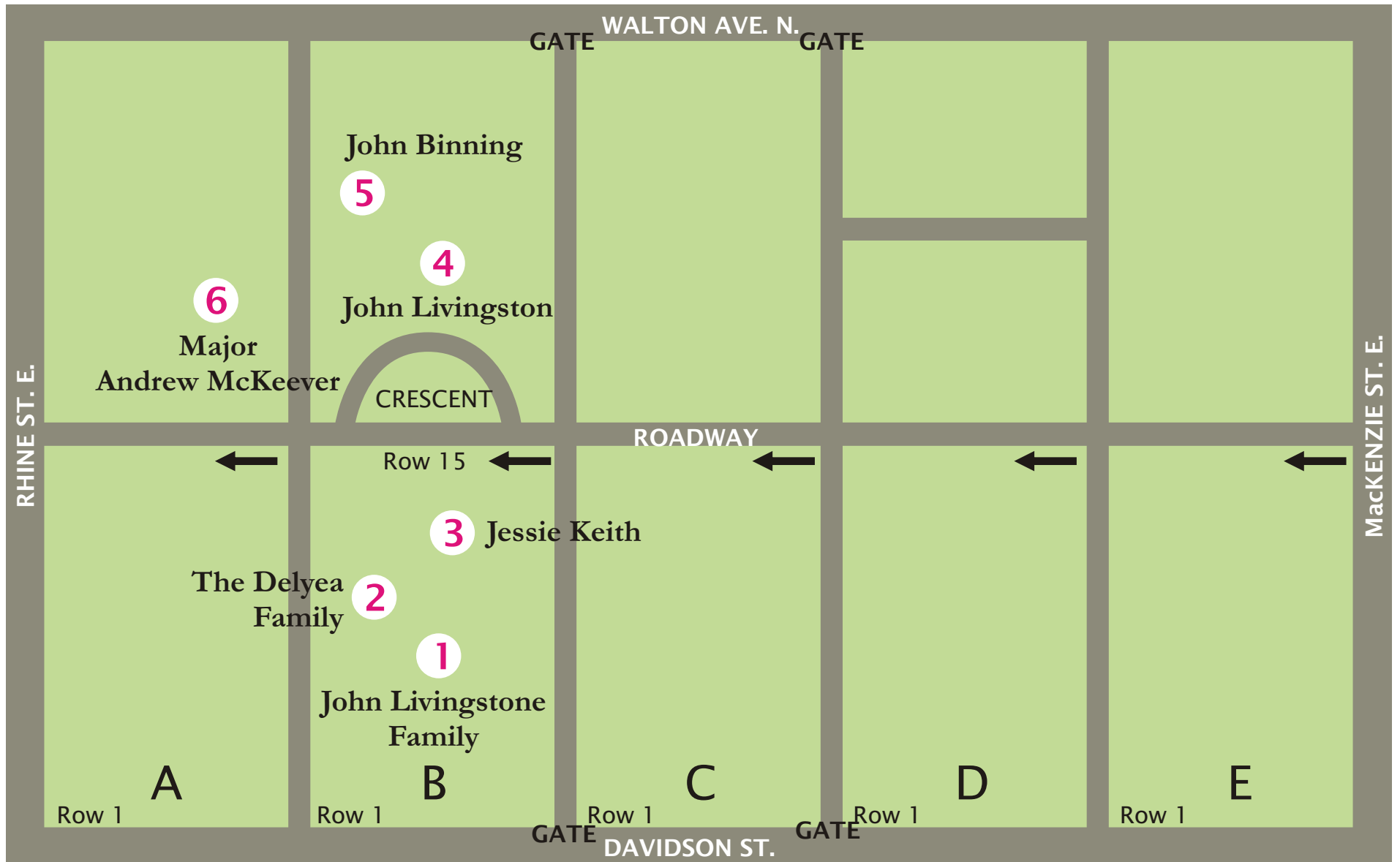
**AVONDALE CEMETERY**

# St. Marys Cemetery



(not drawn to scale)

# Fairview Cemetery Listowel



(not drawn to scale)